

ALCAN

370

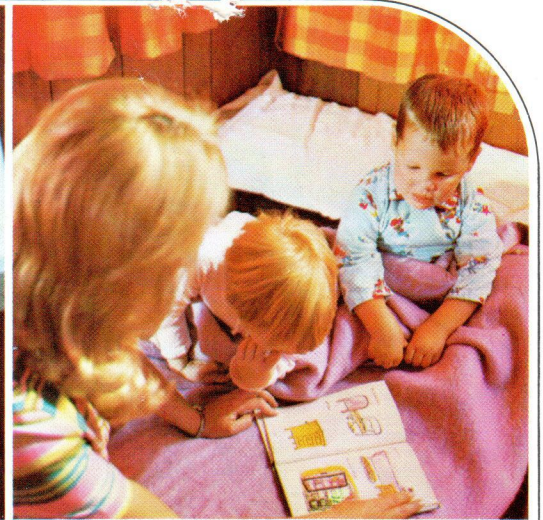
In the Alcan 370
you're driving a home
that cruises, not steering
a house that floats



ALCAN 370







The luxurious ALCAN 370 sets a new quality in boating. It combines the lively performance of a cruiser with the luxury of a modern family home and is designed to sleep six adults in complete comfort.

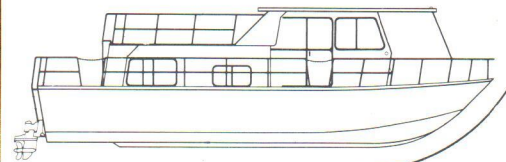
The ALCAN 370 excites pride of ownership. Thirty seven feet long with a twelve foot beam, the boat is extremely maneuverable and when powered by twin 155 horsepower O.M.C.'s. or twin 170 horsepower Volvo's can reach speeds in excess of 25 miles per hour.

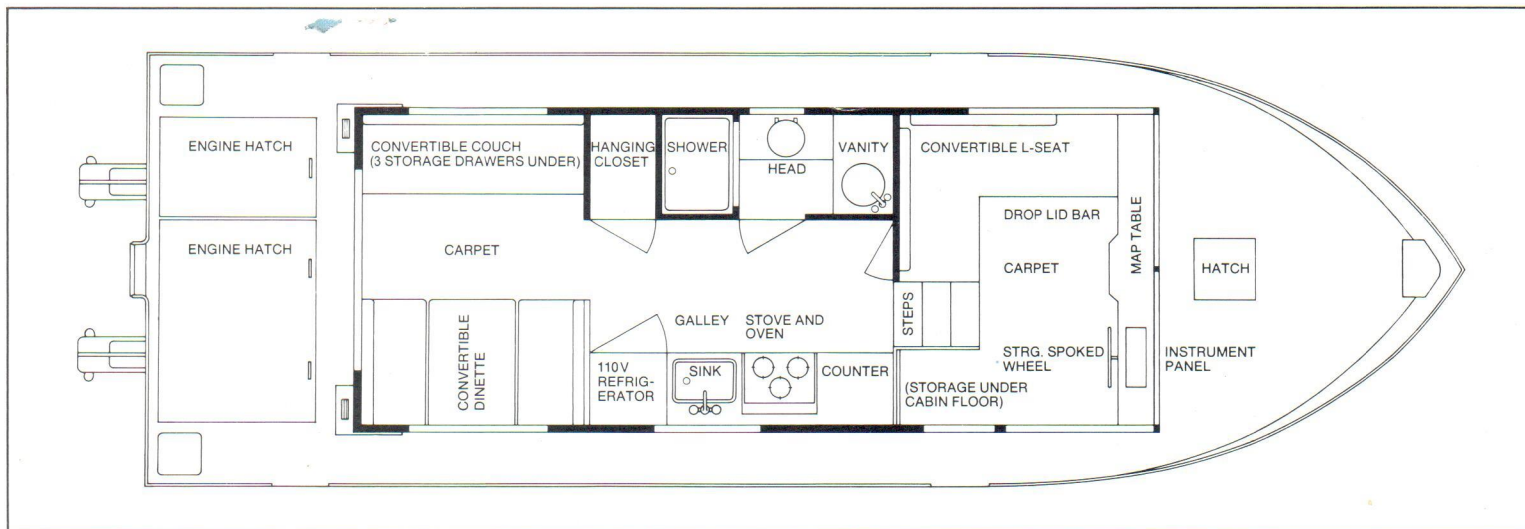
The hull is a cruiser-type modified deep 'V' planing hull providing stability and high performance.

Featuring a roomy interior with full head room, teak panelling, full carpeting, durable upholstered couches, head equipped with shower (hot and cold running water), panoramic windows.

For shipboard power, there's a 6.5 kw generator. There are two lighting circuits (110 v. and 12 v.) and 110 v. duplex outlets.

Your authorized ALCAN 370 dealer will be pleased to arrange a demonstration cruise.





Specifications

Length (Overall)		37'- 6"
Height (Overall)		11'- 2"
Beam		11'-11"
Freeboard Forward		4'- 4"
Aft		2'-10"
Transom	Height from Waterline	2'-10"
	Width	11'-11"
Walkways		16"
Draft	At Keel	20"
	At Outdrive	39"
Keel		9"
Cabin	Length	22'- 6"
	Width	8'-7 $\frac{1}{4}$ "
	Height	6'- 5"
Deck	Forward	7'- 9"
	Aft	5'- 7"
	Sundeck	12'- 6"
Fuel Capacity Twin	125 Gals. (100 Imp. Gals.)	
Water Capacity	47.5 Gals. (40 Imp. Gals.)	
Hull	Fully Welded Marine Aluminum	
Superstructure	Finished with Baked Aluminum Sheet	
Hand Rails	Marine Aluminum	
Windows and Doors	Heavy-Duty, Marine-Type Anodized Aluminum Frames Safety Glass	
Hatch Sizes	Forward	2 Ft. Square
	Aft	4'-8" x 2'-9"
		4'-8" x 5'-7"
Weight	2-170 H.P. Volvo	11,500 lb.
	2-155 H.P. O.M.C.	11,100 lb.

Standard Equipment

Helmsman's Seat — Pedestal Type
 Teak Panelled Interior Trimmed with Anodized Aluminum and Natural Teak Mouldings
 Foamed Cushions — Nylon Fabric Upholstery
 Carpeted Cabin Floors
 Window Curtains
 'L' Shaped Convertible Seat in Pilot House to Sleep Two
 Dinette and Settee in the rear convert to Sleeping Accommodations for Four
 Built-in Map Shelf and Bar on Pilot Cabin Console
 Planned Galley with Formica Top
 Refrigerator — 110VAC
 Three Burner Electric Range and Oven — 110VAC
 Stainless Steel Sinks
 Wall Mounted and Under Counter Cabinets
 Full Height Hang Up Closet
 Ample Drawers and Storage Compartments
 Standard Head with Holding Tank
 Shower with Curtain
 Medicine Cabinet with Mirror
 Hot and Cold Running Water Pressurized with a 12 Volt System
 Two Lighting Circuits — 110VAC and 12VAC
 Ship to Shore 110VAC Dock Receptacle
 110VAC Duplex Outlets
 6.5 kW Generator
 International Navigation Lights
 Heavy Duty Windshield Wiper
 Low and High Tone Horn
 Collision Bulkhead
 Separate Engine Compartment
 Flush Mounted Engine Compartment Hatch Covers

All Hatch Covers Self-Draining
 Exhaust Blower in Engine Compartment in Addition to Four Way Ventilation System
 Automatic and Manual Bilge Pumps
 All Fuel Lines $\frac{3}{8}$ " Copper Tubing with Flared Flange Fittings
 Color Coded Wiring System
 Non Skid Decks
 Vinyl Covered Sundeck
 Anti-Fouling Bottom Paint
 Swim Ladder
 Ladder to Sundeck
 Heavy Gunwale Extrusions with Rubbing Strip
 Grab Rails both Sides of Aft Cabin
 Destroyer-Type Stainless Steel 22" Ship's Wheel
 Battery Selector Switch for Accessories on Custom Instrument Panel
 Superior Craftmanship in Trim and Cabinet Work

ALCAN 370
 Twin O.M.C. 155 H.P.
 Twin Volvo 170 H.P.
 Twin Volvo Diesel D-29 92 H.P.
 Base Price



**Factory Installed
 Optional Equipment**

	Subtotal carried forward		Subtotal carried forward	
Additional Wiper	Hour Meter		Extruded Anodized Hand Rails Instead of Painted Rails	
Privacy Curtain	Demist System			
Privacy Divider Curtains	Extra 30 Amp. 110V Power Inlet		Outdrive Protectors	
Privacy Partitions	Duplex Outlets 110V 15 Amp.		Heavy Duty Batteries	
90 Gals. (75 Imp. Gals.)	Extra Dome Light		Shore Water Intake	
Cradle	Extra Galley Light		Forward Hatch Lock	
Heavy Duty 50' Ship to Shore Line 110V	Generator Heat Exchanger		Through Deck Manual Bilge Pump	
Interconnecting Fuel Lines for Generator from Both Tanks	Automatic Demand Start for Generator		Ship's Bell	
Rudder Indicator	Air Conditioner — Roof Mounted			
MonoMatic Head System A				
MonoMatic Head System B				
	Subtotal		Grand Total	

Note: For Low Pressure Gas Option

An alternative to the ALCAN 370 all-electric houseboat is the L.P.G. model. In this model the following items are deleted: 6.5 kw generator, electric stove and oven and electric refrigerator. The L.P.G. model has all the standard features of the all-electric model except for the above mentioned deleted items. The L.P.G. model includes a three burner gas stove (without oven), two 20 lb. gas cylinders and an ice box. Your authorized dealer will inform you of the price reduction resulting from this option.



Authorized dealer: