

SPORTS PATROL 38

11.58m



ALLOY

MANUFACTURING LTD.

300 CANAL BANK
VILLE ST-PIERRE, QUE.

TEL: (514) 487-2333

P.O. BOX 240
LACHINE, QUE.
MONTREAL, QUE.
H8S 4A6

DISTRIBUTED BY

KEEN KRAFT
Yacht Sales Inc.

680 FRONT STREET
PICKERING - ONT. - FRENCHMANS BAY
416-839-2131

The combination of speed, performance and luxurious facilities for carefree family boating are the hallmark of the ALLOY SPORTS PATROL 11,58m (38').

The aero-dynamic superstructure, deep 'V' double bottom planing hull plus precision engineered sensitive controls give immediate response and "turn on a dime" features without any drift or roll (double hull acts as water tank lowering center of gravity).

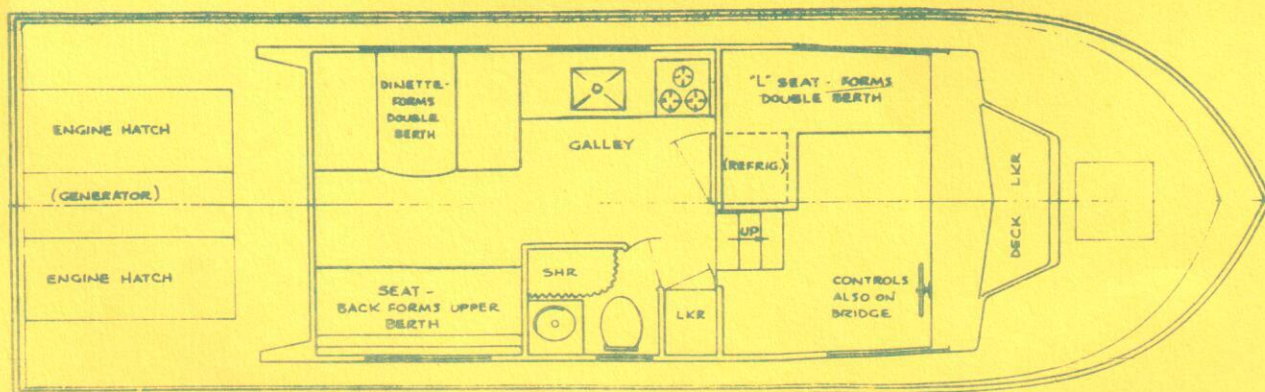
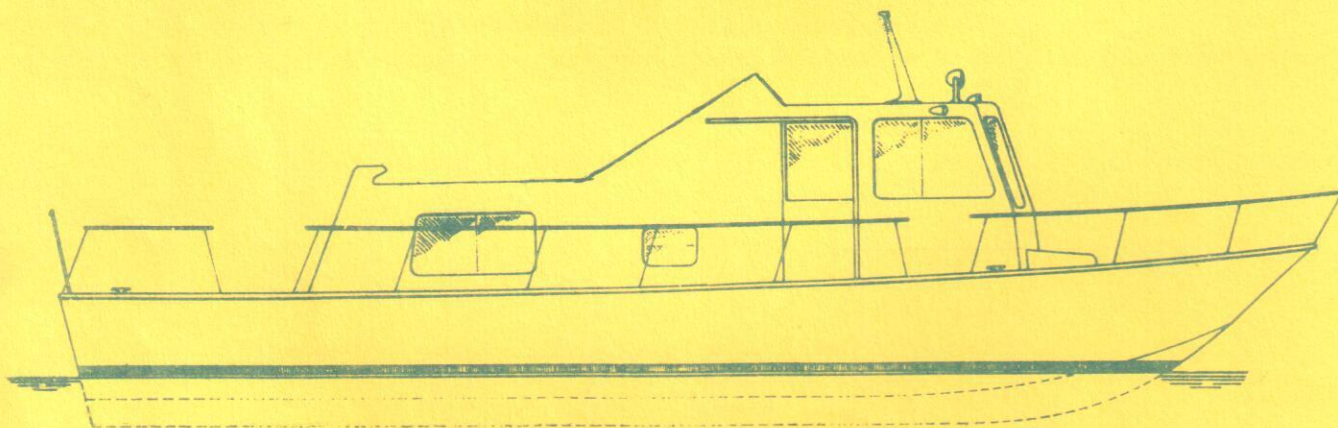
The Sports Patrol is constructed of high quality 3/16" marine aluminum throughout and has completely water-tight bulkheads fore and aft and FRP superstructure (optionally insulated). Marine windows ensure watertightness and come with fly screens and are placed such to give complete visibility fore and aft from the lower station. The uniquely designed and location of the flying bridge gives a 360° view. All components and accessories are tested under the most adverse conditions to guarantee safety and pleasure.

Single or twin high-powered Mercruiser I/O engines with 20" propellers are available and fitted to reinforced 1/4 transoms for zero distortion. Also available are short coupled V-drive inboard engines with 17" propellers.

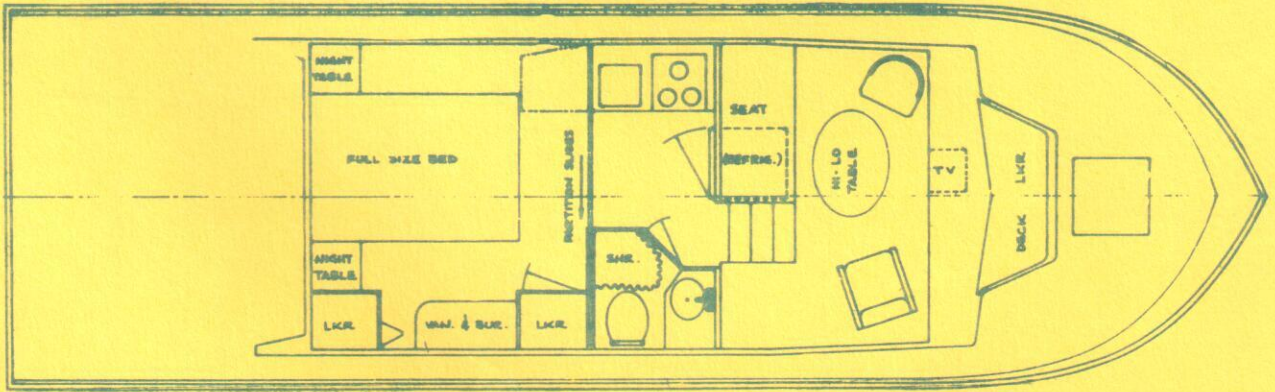
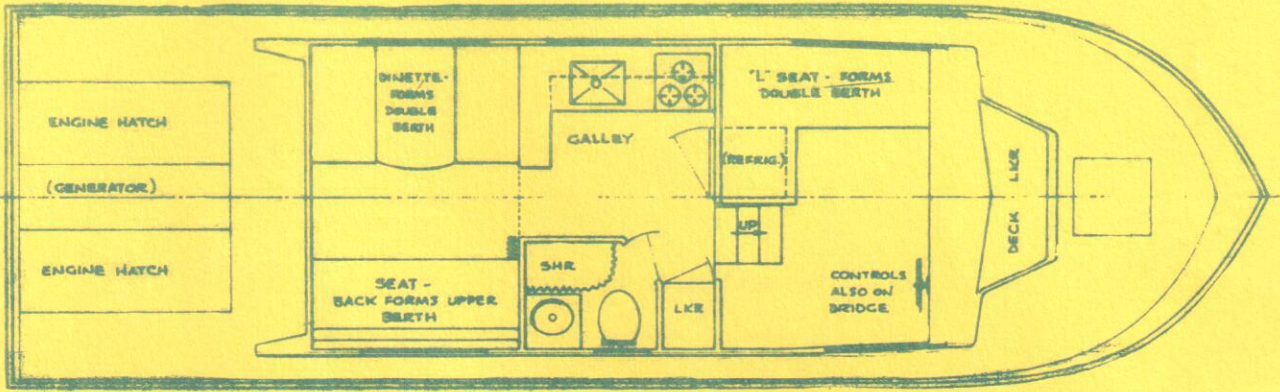
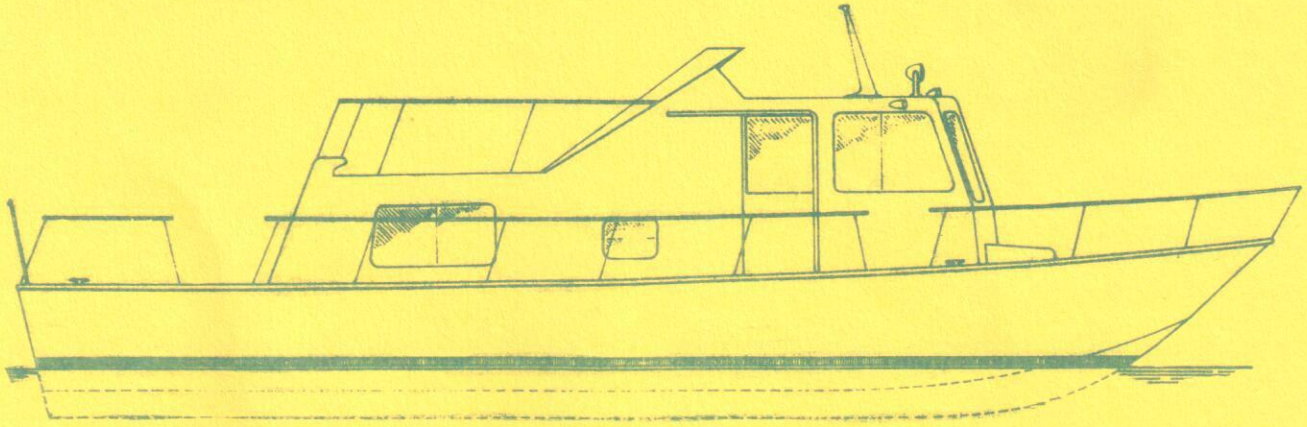
Utilization of space and practicality combined to give the Sports Patrol 11.58m all the big boat features such as a gourmet U-shaped galley complete with full size sink and electric range and oven. (A refrigerator is available as an optional feature).

Comfort, good looks and safety are featured throughout the Sports Patrol, teak panelling and board, custom styled curtains, upholstery, luxurious pile carpet, contoured side walls and big oval fully welded heavy-duty hand-rails and ladders.

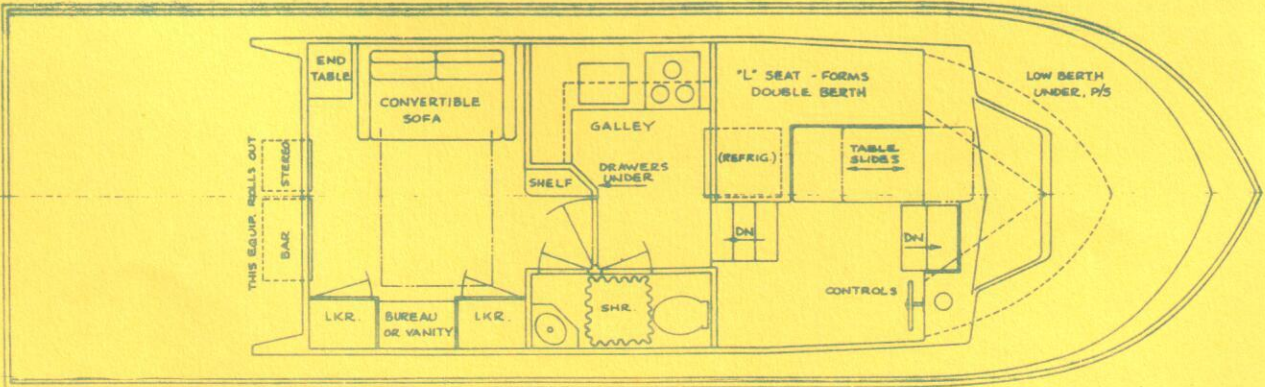
STANDARD LAYOUT



OPTIONAL LAYOUTS



CONTROLS ON BRIDGE



STANDARD EQUIPMENT

Fully Welded 3/16 Marine Aluminum Hull
 1/4 Inch Transom of Marine Aluminum
 2 Watertight Bulkheads
 Large Engine Room with Large Heavy Duty Hatches
 Cable Locker
 Molded F.R.P. Superstructure
 Heavy Duty Aluminum Windows and Doors, Windows complete with Screens
 Control Panel in Main Station (Hinged for easy servicing)
 Mercruiser Controls
 Mercury Single 255 HP. Engine with 20" Propeller I/O
 Single Gas Tank
 Battery 12 Volt
 12 and 110 Volt Lighting
 110 Volt Wiring (No Shore Cord)
 Engine Compartment Blower
 Bow Roller and Mooring Cleats
 1 Electric Bilge Pump
 Heavy Duty Full Main Deck Railings
 Swim Ladder
 Non-Pressurized Water System
 Interior Carpeting Throughout
 Marine Head
 Deluxe 2 Burner Stove
 110 Volt Refrigerator
 Integral Fibreglass Head
 Interior Finish of Teak

FACTORY INSTALLED OPTIONAL EQUIPMENT

Flying Bridge Controls	Single Engine	1,875.00
	Twin Engine	2,875.00
Monomatic Head		500.00
Air Conditioner		1,500.00
✓ Shower with curtain		695.00
✓ Keel Mounted Anodes		225.00
Electrolysis Monitor		250.00
✓ Privacy Partition		535.00
✓ Additional Windshield Wiper		150.00
Sundeck Carpet		275.00
Sundeck Non Skid Matting		650.00
✓ Sundeck Rail and Access Ladder		425.00
✓ Shore Water Intake		185.00
Outdrive Protectors		230.00
✓ Automatic Bilge Pump		195.00
✓ Hot Water Heater		300.00
✓ Pressurized Water System		350.00
✓ Alcohol or Electric Insert for Combination Stove		150.00
✓ Window Drapes		595.00
Privacy Divider Curtains		150.00
Cabin Insulation		990.00
Generator Package		3,850.00
Extra Fuel Tank		350.00
Hydraulic Steering		980.00
✓ V-Berth (36 foot boat and up only)		2,750.00
✓ Keel Tank		1,945.00
✓ Windshield		860.00
Extra Mercury Engine (255 HP.)		7,750.00